

Smart Letter of Credit

B2B payment solution based on real time monitoring data



ALL MODALITIES

A white rounded rectangle containing four icons arranged in a 2x2 grid: an airplane, a truck, a ship, and a train. Below the icons, the text "ALL MODALITIES" is written in a bold, dark blue font.

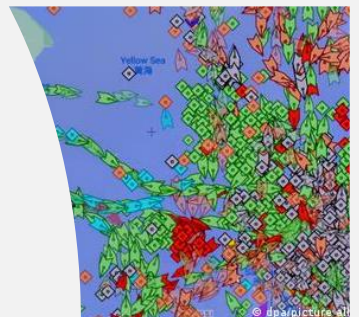
PACKAGED GOODS

A white rounded rectangle containing four icons arranged in a 2x2 grid: a crane lifting a container, a stack of boxes, a pallet, and a stack of boxes. Below the icons, the text "PACKAGED GOODS" is written in a bold, dark blue font.



Problem Statements

Trade financing is still depending on paper documents
End2End shipment monitoring is locked up in Data Silos





Bank-based Letter of Credit (L/C)

Paper-based

- Paper documents are still dispatched around the globe by mail and separate from shipment execution

Error prone

- The process is executed manually by at the advising and the issuing banks
- Even minor mistakes may lead to the loss of the bank guarantee for both trading partners

Expensive

- Depending on the country-, bank- and company, the cost of risk for both trading parties can reach up to 7% of the transaction value

Huge admin burden

- Any alteration in the contract or shipment documentation will lead to a new set of paper- based documents that will then need to be shared with all parties again

Shipment monitoring

Lack of data sharing

- Logistics stakeholders do not share shipment data effectively in a digital manner
- In logistics, collaboration and data sharing is still at a very premature stage
- Too many stakeholders obstruct efficiency

For some stakeholders intransparent execution is intentional

- Many stakeholders have no interest in forwarding freight in a transparent manner, as that would topple their business model

Many different data sources

- Each carrier and LSP has their own data sharing platform

IoT based Monitoring is at its beginning

- For Exporters and Importers there is no end2end monitoring available as yet

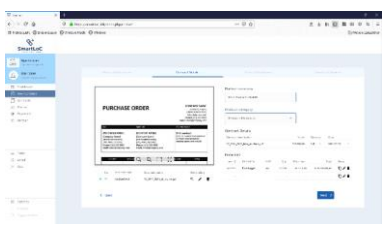


SmartLoC Platform Features and Benefits

IMPORTERS

EXPORTERS

LOGISTICS

1. 

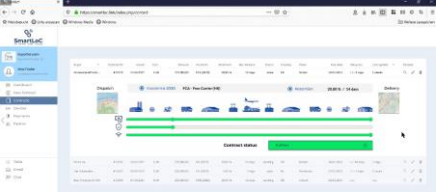
Collaborative Contracts




2. 

Shipment Monitoring

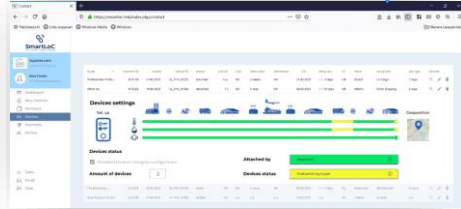


3. 

Trusted Payment 

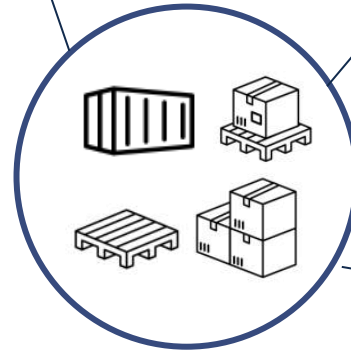
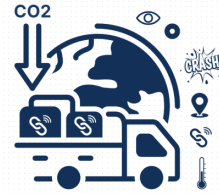
4. 

Supply Chain Intelligence



i SmartLoC is the first company combining multiple services to one Suite as a game changing solution to enable importers and exporters doing their international trade the easiest possible way.

Full container devices



Package devices

Pallets



Boxes



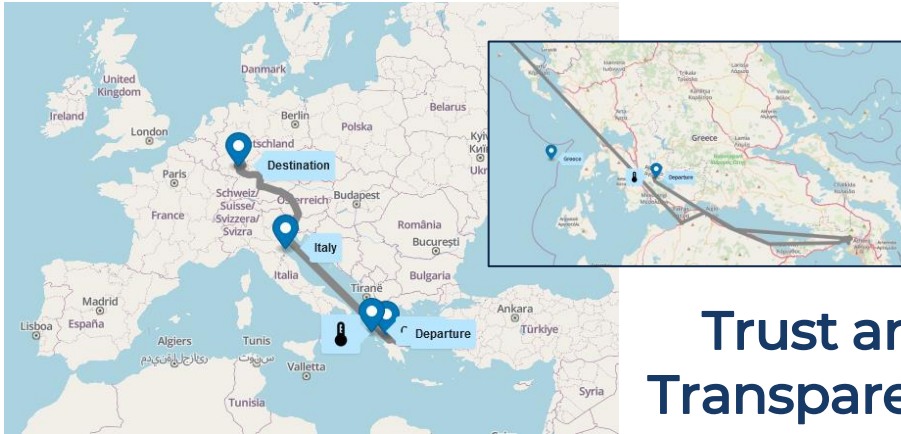
3rd party IoT devices used by SmartLoC are:

- tested
- multi modality
- are independent from a specific carrier support:
- GPS, temperature, humidity, shock, door opening, light, etc.



Shipment Monitoring Service Example

Shipment Monitoring examples



**Trust and
Transparency**

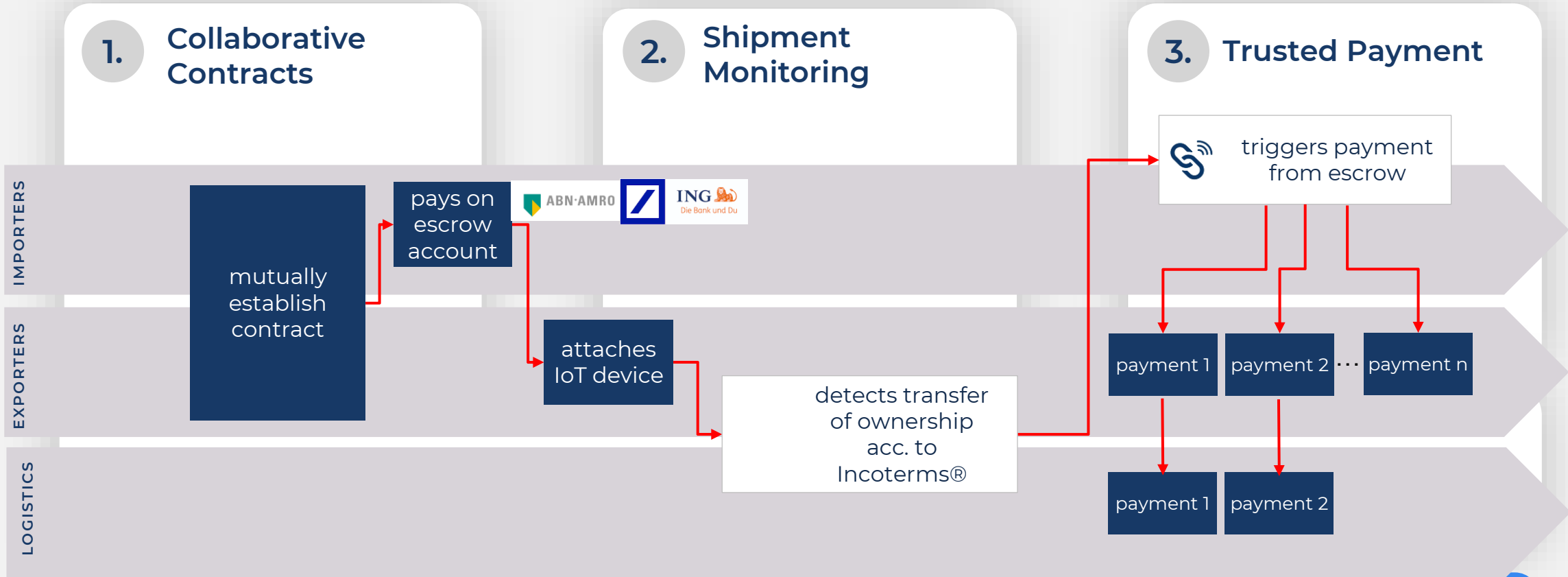
- Detour detections
- timely impact
- CO2 emission
- contract issue and negotiation
- Modality optimization (win – win)
- Load increase
- Reduction of temperature-controlled transports
- Unauthorized door opening detection
- Avoidance of insurance claim issues

One view for both trading partner









SmartLoC's L/C Substitution Service Process



- Instead of **3+% cost** on shipment value, now only interest cost for the shipment duration is charged, leading to **~40% savings** in finance cost only
- **IoT data driven staggered payment** events instead of slow/late paper document process
- Full **shipment execution visibility** and **transparency** on top

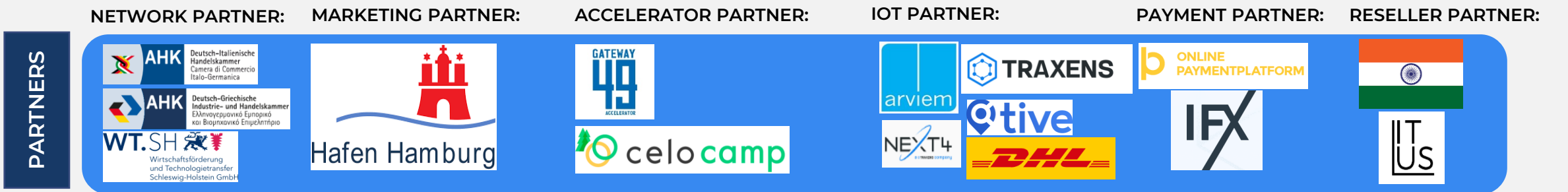
Benefit calculation example in comparison to an L/C

Export from Greece to India EUR 200.000 transaction value

| | | |
|--|---|--|
|  Exporter from Greece  L/C cost 440 € Confirmed L/C ~6.000 € |  Shipment Monitoring & Trusted Payment Service 700 € | <u>Savings:</u> +300 € -5.700 €  Effort reduction |
|  Customer in India  State Bank Of India L/C cost 2.400 € |  Shipment Monitoring & Trusted Payment Service 1.800 € | <u>Savings:</u> -600 € |
| Total cost 2.840 € | Total cost SmartLoC 2.500 € | -1.040 € -37% |
| Total cost with confirmation 8.400 € | Total cost SmartLoC 2.500 € | -5.900 € -70% |



Traction and indicative pipeline





Pilot Customer Statements / Testimonials



Thomas Brinkmann

CEO, GAEA Products S.A.

“With SmartLoC we can offer an alternative to advance payment or L/C to our new customers at cost that offer a substantial added value, also at our shipment volumes.

The shipment monitoring with IoT devices saved us 20% of our CO2 emission and 20% of our logistics cost for the shipment to our most important customer; saving potentials we became aware of, through SmartLoC's support and services.”

[REFER TO CASE STUDY](#)



Axel Mattern

CEO, Hafen Hamburg Marketing e.V.

“SmartLoC is a gamechanger in international trade -, logistics - and payment management.”.



Sebastian Käker

Director Int. Sales & Distribution, NORD Drivesystems

“At NORD Drivesystems we highly appreciate the easy use of the SmartLoC solutions. For our Export business we are benefitting from advantages, like reliable shipment monitoring and trusted payment solution and especially the cost savings for us and our customers. The payment solution offers additional opportunities in capturing new markets.

Monitoring helps us in certain regions and emerging markets to increase the trust level with our customers. Finally, the proactive support of the whole team makes us feel confident. So, we have started to actively roll out all SmartLoC services to our direct market customers and distributors.“



Prof. J. Rod Franklin opinion on SmartLoC

“The need for **seamless flows of** goods, information and **financial payments** is critical to the success of the Physical Internet (PI) vision. **SmartLoC** facilitates the **automated approval, tracking** of goods, and **payment** of international goods shipments subject to letters of credit, a process that today blocks achieving the PI vision for all but the largest of organizations. It is an **excellent example** of the creative thinking needed **to change antiquated business processes and realize the PI vision.**”



Start Up Award

IPIC 2023

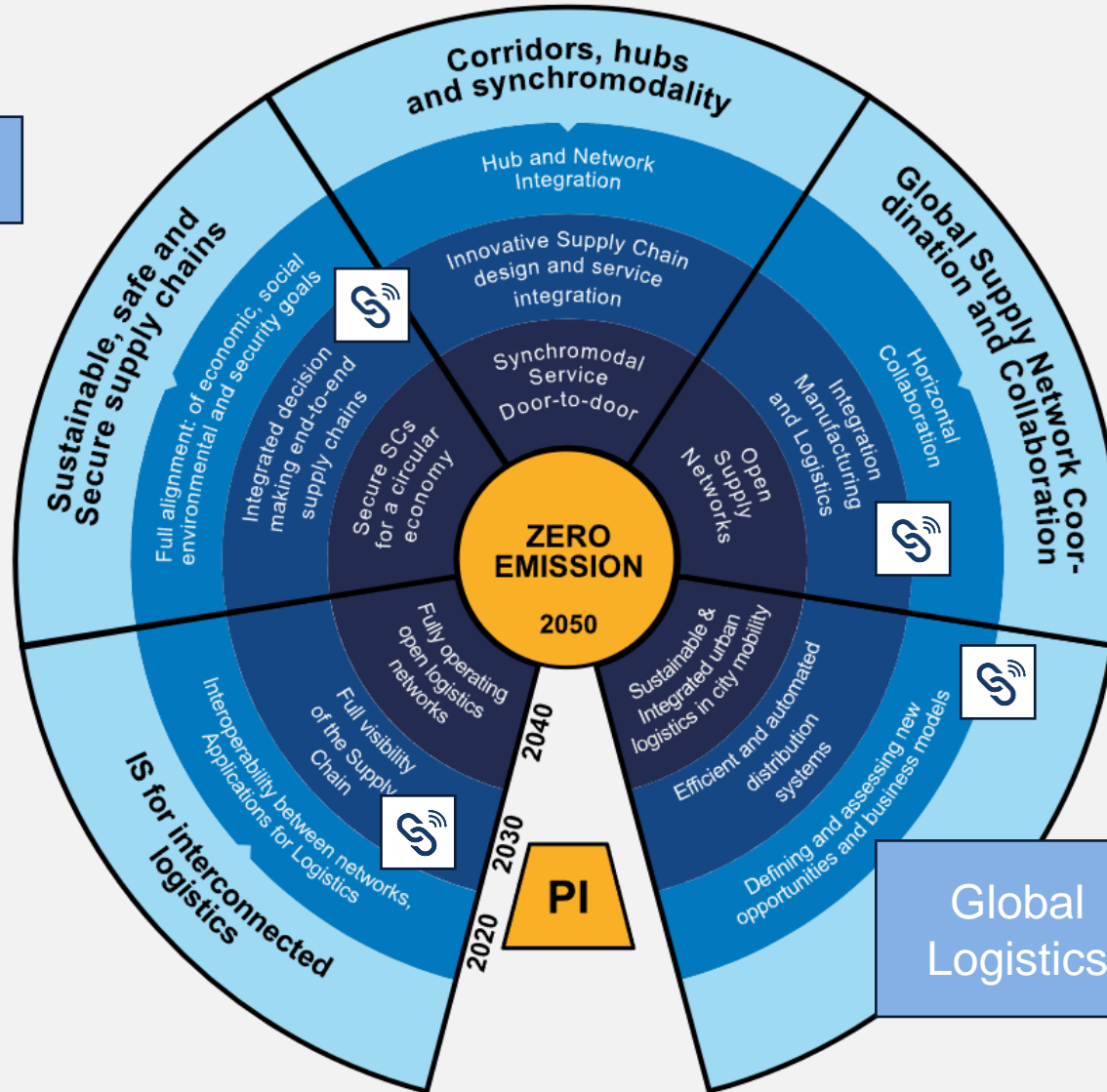


ALICE road map to the Physical Internet II

Lieferkettengesetz

digitization

ESG conform



Zero Co2 emission

Circular process for IoT devices

Global Logistics

Start Up Award
IPIC 2023



Team – experienced, diverse and international



Britta Balden CEO

30+ years in management and digitization
Visionary – Strategy – Network



Domain Expert

- Supply Chain Collaboration
- E-invoicing founder @ [Retail-Link.gr](#)
- Leading Role in H2020 projects
- Serial Entrepreneur with successful exit



Thomas Kuhlke COO

30+ years in management and digitization
Product Owner – Process & Platform Design



Large-scale Projects

- Digital Leader
- Business Innovator
- Senior PM
- Certified Scrum Master & Product Owner



Alessandro Vaglini IoT- CSO

20+ years intern. Sales and engineering
IoT expert – HW Technologies



- Program Manager & certified PM
- Expert in UN/UNECE
- H2020 projects



Development Hub - Greece

65+ years in software engineering



- 3 internal, 1 external Senior Full Stack Dev
- Staffing funnel well-stocked
- Proven experience in software architecture, development, domains etc.
- Agile development approach

Industrial and Startup Experience





Become a Part of the Success Let's make a real Impact on Global Trade



Contact us !

Britta Balden
CEO

+49 1520 7135 402
B.Balden@SmartLoC.link
SmartLoC.link

SmartLoC
IOT DRIVEN TRADE FINANCE